



### **371021 (E7INEH4000)**

4-zone (3,5 kW each) electric Induction Cooking Top

### **371132 (E7INEH400N)**

4-zone (3,5 kW each) electric Induction Cooking Top

## **Main Features**

- Almost the entire surface of the ceramic plate can be used without “dead” spots.
- Indicating lamp for each zone located on control console.
- Induction plates endowed with overheating safety device.
- IPx4 water protection.
- Low heat dissipation to the kitchen.
- Power to the individual zones can be set with progressive output i.e. fine regulation at the lower and larger progress at the upper levels.
- The smooth, glass ceramic plate is not directly heated, so there is no burning on cooking surface.
- 6mm glass ceramic cooking surface with 4 independently controlled induction zones with a power of 3.5 kW per zone.
- Pots diameter to be used : min 12cm, max 28 cm in order to obtain maximum heating efficiency.
- Suitable for countertop installation.

## **Construction**

- Model has right-angled side edges to allow flush fitting joints between units, eliminating gaps and possible dirt traps.
- One piece pressed 1.5 mm work top in Stainless steel.
- All exterior panels in Stainless Steel with Scotch Brite finishing.

## **Sustainability**

- This model is compliant with Swiss Energy Efficiency Ordinance (730.02).



## Optional Accessories

PNC Code	Description
<b>Bridge supports</b>	
206137	Support for bridge type installation, 800mm
206138	Support for bridge type installation, 1000mm
206139	Support for bridge type installation, 1200mm
206140	Support for bridge type installation, 1400mm
206141	Support for bridge type installation, 1600mm
<b>Chimney upstands</b>	
206304	Chimney upstand, 800mm
206400	Chimney grid net, 400mm (700XP/900)
<b>Cleaning solutions</b>	
164255	Scraper for smooth plate fry tops (only for 371132)
<b>Containers, trays and grids</b>	
164250	GN2/1 chrome grid for static oven (only for 371021)
<b>Panels</b>	
216277	2 side covering panels for top appliances
<b>Water taps</b>	
206291	Water column extension for 700 line



# Technical specifications

371021 371132

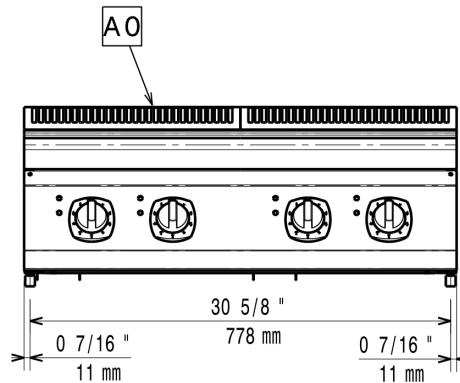
Front

## Electric

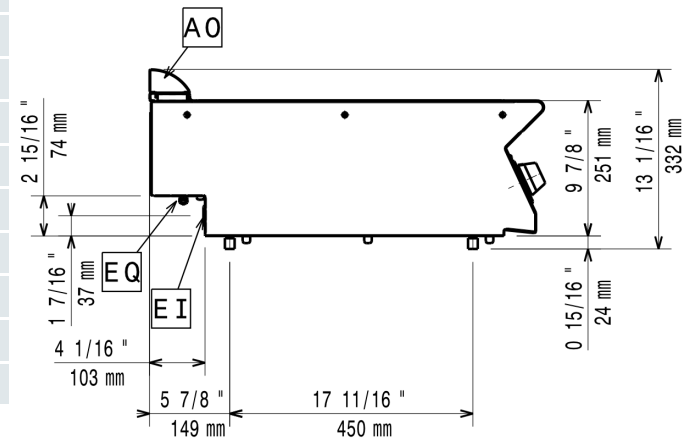
Supply voltage:	380-415 V/3 ph/50/60 Hz	230 V/3 ph/50/60 Hz
Total Watts:	14 kW	14 kW
Predisposed for:	380-415V 3-50/60Hz 14kW	

## Key Information:

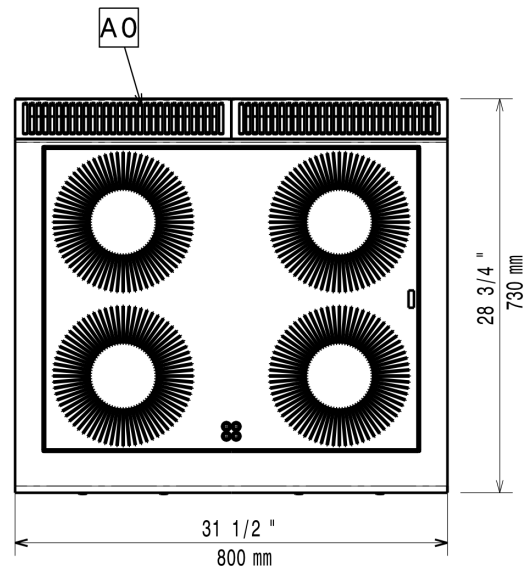
External dimensions, Width:	800 mm	800 mm
External dimensions, Depth:	730 mm	730 mm
External dimensions, Height:	250 mm	250 mm
Net weight:	57 kg	57 kg
Shipping weight:	65 kg	67 kg
Shipping height:	530 mm	520 mm
Shipping width:	820 mm	820 mm
Shipping depth:	860 mm	860 mm
Shipping volume:	0.37 m <sup>3</sup>	0.37 m <sup>3</sup>
Certification group:	IH740	NIN87F
Induction Top Dimensions (width):	800 mm	800 mm
Induction Top Dimensions (depth):	730 mm	730 mm



Side



Top



EI = Electrical inlet (power)

EQ = Equipotential screw



Find out more:  
ISO Certificates  
Electrolux Professional Recognitions

The company reserves the right to make modifications to the products without prior notice. All information correct at time of printing.

09/03/2026

3/3