



371020 (E71NED2000)

2-zone (3,5 kW each) electric Induction Cooking Top

371131 (E71NED200N)

2-zone (3,5 kW each) electric Induction Cooking Top

Main Features

- Almost the entire surface of the ceramic plate can be used without “dead” spots.
- Indicating lamp for each zone located on control console.
- Induction plates endowed with overheating safety device.
- IPx4 water protection.
- Low heat dissipation to the kitchen.
- Power to the individual zones can be set with progressive output i.e. fine regulation at the lower and larger progress at the upper levels.
- The smooth, glass ceramic plate is not directly heated, so there is no burning on cooking surface.
- 6mm glass ceramic cooking surface with 2 independently controlled induction zones with a power of 3.5 kW per zone.
- Pots diameter to be used : min 12cm, max 28 cm in order to obtain maximum heating efficiency.
- Suitable for countertop installation.

Construction

- Model has right-angled side edges to allow flush fitting joints between units, eliminating gaps and possible dirt traps.
- One piece pressed 1.5 mm work top in Stainless steel.
- All exterior panels in Stainless Steel with Scotch Brite finishing.

Sustainability

- This model is compliant with Swiss Energy Efficiency Ordinance (730.02).



Optional Accessories

| PNC Code | Description |
|------------------------------|---|
| Bridge supports | |
| 206137 | Support for bridge type installation, 800mm |
| 206138 | Support for bridge type installation, 1000mm |
| 206139 | Support for bridge type installation, 1200mm |
| 206140 | Support for bridge type installation, 1400mm |
| 206141 | Support for bridge type installation, 1600mm |
| 206154 | Support for bridge type installation, 400mm |
| Chimney upstands | |
| 206303 | Chimney upstand, 400mm |
| 206400 | Chimney grid net, 400mm (700XP/900) |
| Grease/oil management | |
| 206346 | Grease/oil kit container for 700 line frytops (half and module) and 900 line frytops (module) (only for 371131) |
| Panels | |
| 216277 | 2 side covering panels for top appliances |
| Water taps | |
| 206291 | Water column extension for 700 line |



Technical specifications

371020

371131

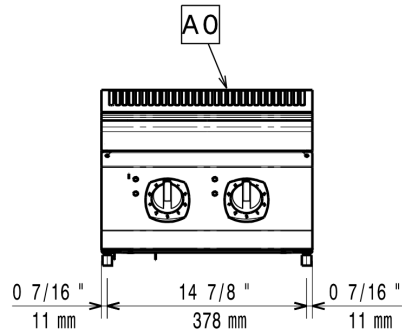
Front

Electric

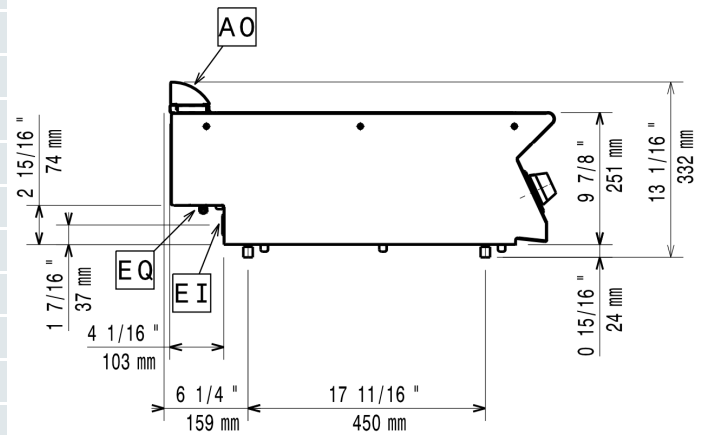
| | | |
|------------------|-------------------------|---------------------|
| Supply voltage: | 380-415 V/3 ph/50/60 Hz | 230 V/3 ph/50/60 Hz |
| Total Watts: | 7 kW | 7 kW |
| Predisposed for: | 380-415V 3-50/60Hz 7kW | |

Key Information:

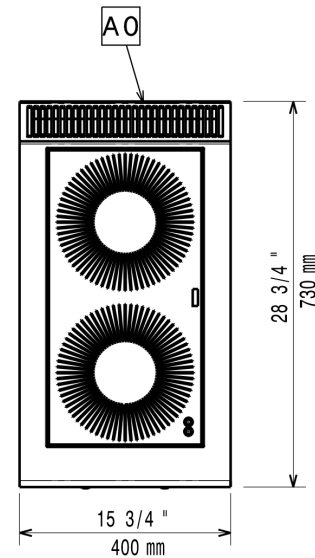
| | | |
|-----------------------------------|--------------------|--------------------|
| External dimensions, Width: | 400 mm | 400 mm |
| External dimensions, Depth: | 730 mm | 730 mm |
| External dimensions, Height: | 250 mm | 250 mm |
| Net weight: | 30 kg | 30 kg |
| Shipping weight: | 38 kg | 39 kg |
| Shipping height: | 530 mm | 540 mm |
| Shipping width: | 460 mm | 460 mm |
| Shipping depth: | 820 mm | 820 mm |
| Shipping volume: | 0.2 m ³ | 0.2 m ³ |
| Certification group: | IH720 | NIN47F |
| Induction Top Dimensions (width): | 400 mm | 400 mm |
| Induction Top Dimensions (depth): | 730 mm | 730 mm |



Side



Top



EI = Electrical inlet (power)

EQ = Equipotential screw



Find out more:
ISO Certificates
Electrolux Professional Recognitions

The company reserves the right to make modifications to the products without prior notice. All information correct at time of printing.

09/03/2026

3/3